

NOTE: CLOCKWISE IN GIVES COUNTERCLOCKWISE OUT

CONSULT FACTORY
FOR SPECIAL
CONFIGURATIONS

**INPUT
PATTERN**

BLANK IS STD.
OTHERS
AVAILABLE

RATIO: 1:1
TORQUE: 250 FT-LB [340 N-M]
TEMP: -20°/150°F [129°/66°C]
WEIGHT: 28 LBS [12.7 KG]

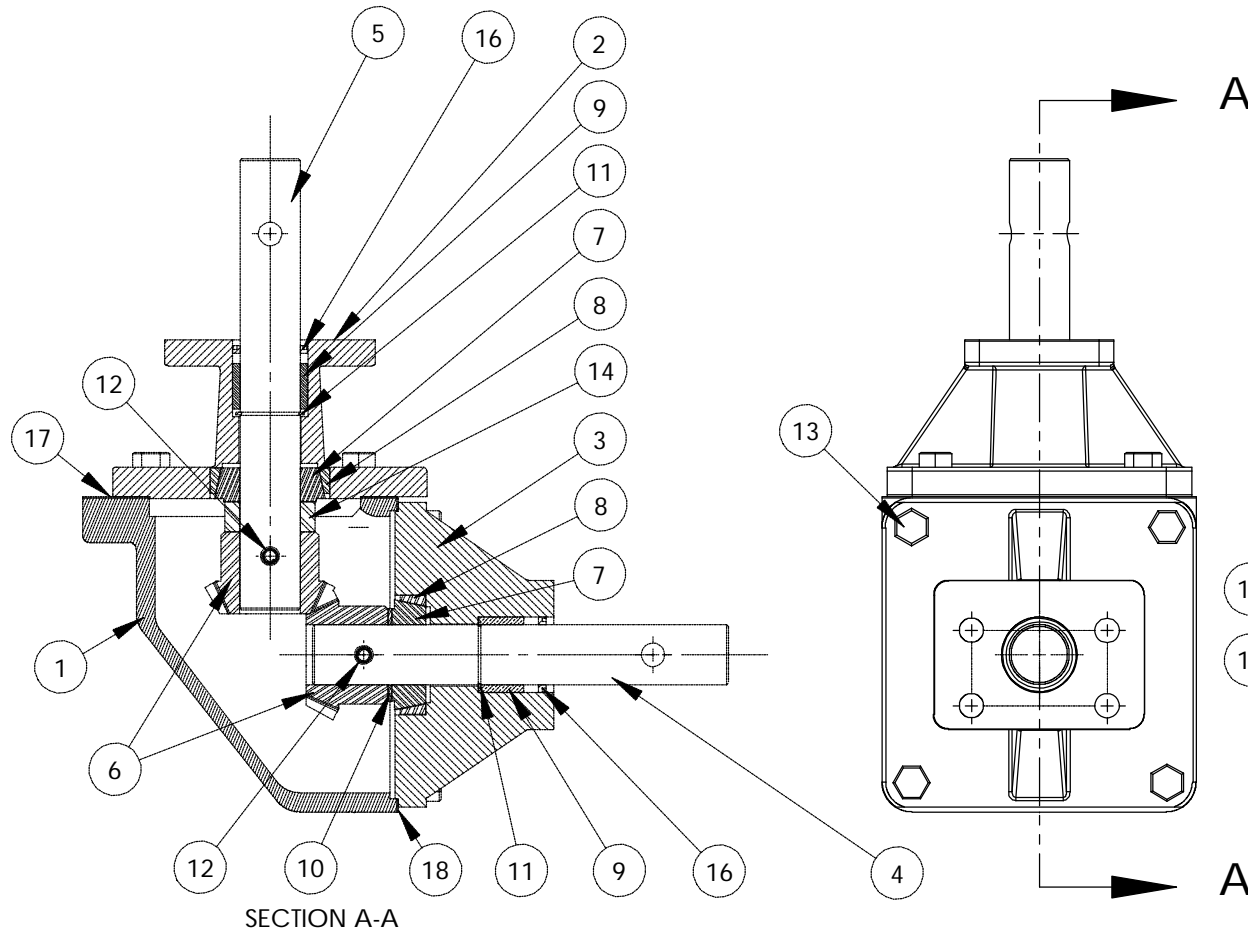
GREASED FOR LIFE

**MANUAL MITER GEAR
COMMERCIAL GRADE**

DYNATORQUE

1934 E. SHERMAN MUSKEGON, MI 49444-1824
(231) 739-1377 FAX (231) 739-4514
WWW.DYNATORQUE.COM

**MITER
1:1**



- 15 UNIT BEARINGS & GEAR TEETH ARE GREASED.
- 19 UNIT IS PAINTED BLACK OXIDE.

ITEM	QTY.	DESCRIPTION	ITEM	QTY.	DESCRIPTION
1	1	HOUSING, MITER, MACH.	13	8	HHCS, 3/8-16 X 1.00 LG
2	1	MITER FLANGE, INPUT	14	1	WORM SPACER
3	1	MITER FLANGE, OUTPUT	15	1	GREASE, COMMERCIAL GRADE
4	1	SHAFT, MITER, 1:1 STANDALONE	16	2	LIP SEAL, 1.00
5	1	SHAFT, MITER, 1:1, STD	17	1	GASKET, MITER, INPUT
6	2	GEAR, MITER, 1:1 OUTPUT	18	1	GASKET, MITER, OUTPUT
7	2	ROLLER BRG, CONE	19	1	BLACK OXIDE
8	2	ROLLER BRG, CUP	DYNATORQUE 1934 E. SHERMAN MUSKEGON, MI 49444-1824 (231) 739-1377 FAX (231) 739-4514 WWW.DYNATORQUE.COM		
9	2	BEARING SLV, 1.25, 1.00, .75			
10	1	THRUST WASHER, 1.00, .061			
11	2	EXT LOCK RING, 1.00, LOW PROFILE			
12	2	COIL PIN, .312, 1.50	MITER 1:1		