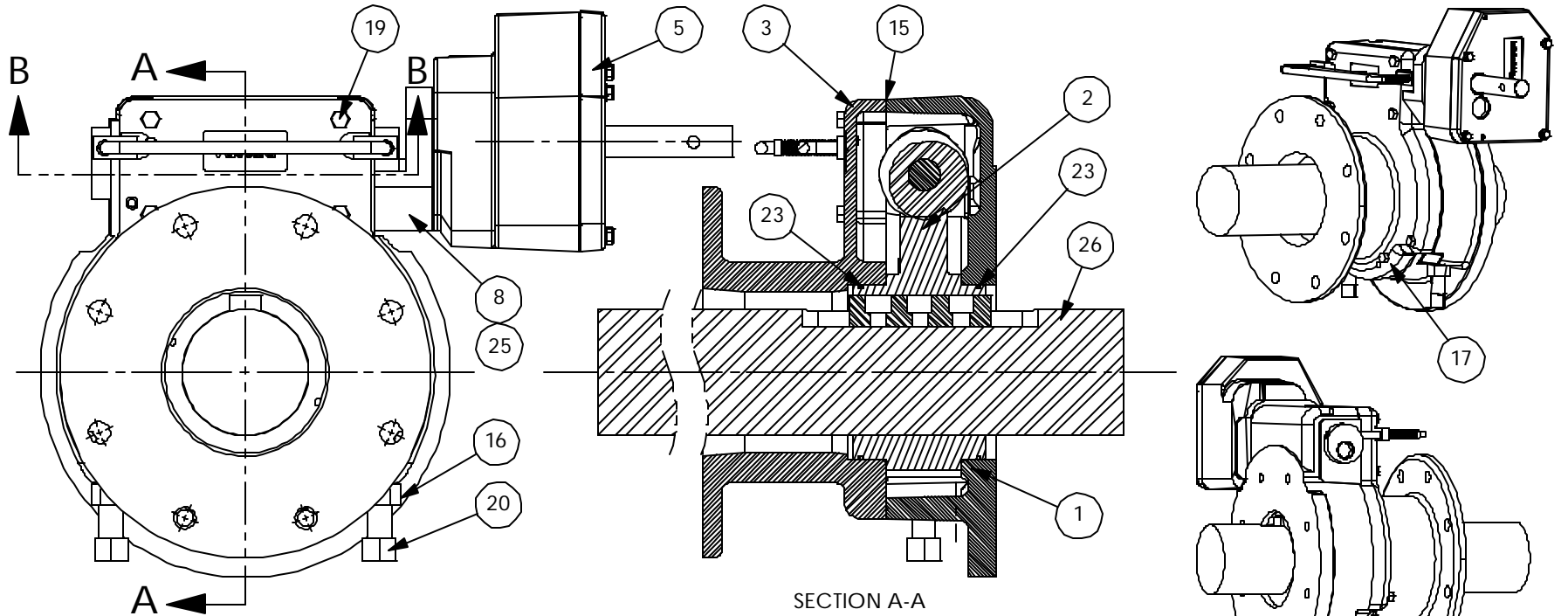
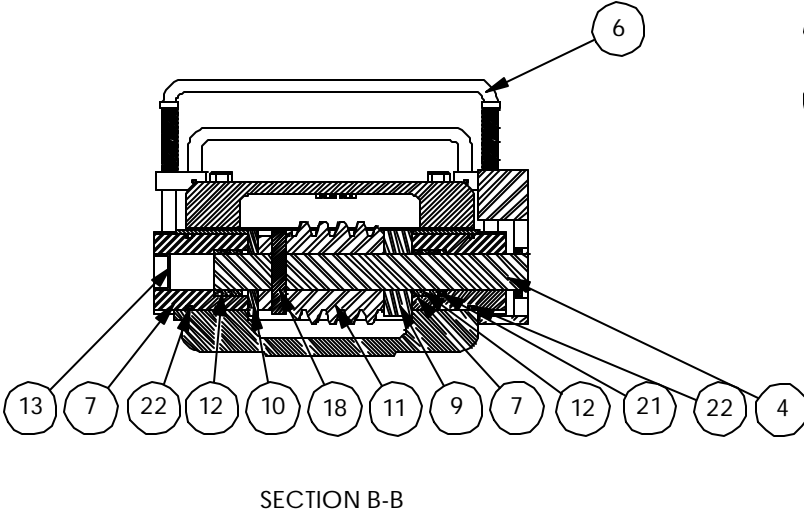


CONSULT FACTORY FOR SPECIAL CONFIGURATIONS.

		SPRING HANDLE LOCKS UNIT IN ENGAGED OR DISENGAGED POSITION. UNIT SHOWN IN ENGAGED POSITION. GREASED FOR LIFE. PLATED STANDARD SHAFT.	MAX DRIVER BORE & KEY		HANDWHEEL RECOMMENDED: ϕ : 36 IN RIM PULL AT MAX TORQUE: 100 LBS TURNS FOR 90°: 60	RATIO: 240:1 TORQUE: 90,000 IN LBS [10171 N-M] TEMPERATURE: -20° TO 150°F [-29° TO 66°C] WEIGHT UNIT: 184 LBS [83.6 KG] DRIVER: 67 LBS [30.5 KG] HANDWHEEL: 17 LBS [7.7]			
HOUSING MOUNTING PATTERN			COVER MOUNTING PATTERN						
MAX ϕ 11.750 3/4-10	MAX ON CENTER ϕ 11.750 3/4-10	STD ϕ 10.000 5/8-11	MIN ϕ 6.500 3/4-10	MAX ϕ 10.750 ϕ .812	MAX ON CENTER ϕ 10.750 ϕ .812	STD ϕ 10.000 ϕ .688	MIN ϕ 8.500 ϕ .688	MANUAL 1/4 TURN ACTUATOR COMMERCIAL GRADE DYNATORQUE WWW.DYNATORQUE.COM 10/12/05	DT90 SD



- 14 UNIT BEARINGS, O-RINGS AND GEAR TEETH ARE GREASED.
- 24 UNIT IS PAINTED BLACK OXIDE PRIMER.
- 27 HWRR 36" HAND WHEEL NOT SHOWN.



SECTION B-B

ITEM	QTY.	DESCRIPTION	ITEM	QTY.	DESCRIPTION			
1	1	HOUSING,DT60SD	17	2	DOWEL PIN,.375,1.00			
2	1	W/WHEEL, DT60	18	1	GROOVE PIN,.375,2.25			
3	1	COVER,DT60SD	19	8	HHCS, 3/8-16 X 2.00 LG			
4	1	SHAFT,DT90SD	20	2	SHSS, 3/4-10 X 4.50			
5	1	SPUR, 4:1, SD	21	1	O-RING,2-214			
6	1	DECLUTCH HANDLE, DT60/90 SD, S.S.	22	2	O-RING,2-226			
7	2	DECLUTCH BUSHING, DT60/90 SD, S.S.	23	2	O-RING,2-160			
8	1	BRACKET,SPUR,SD	24	1	PAINT, PRIMER, BLACK OXIDE			
9	1	WORM SPACER	25	3	SHCS,3/8-16 X 1.75 LG			
10	1	WORM SPACER	26	1	DRSD, DT90, BLANK			
11	1	WORM,DT60, STD	27	1	HWRR 36"			
12	2	BEARING SLV,1.25,1.00,.75	DYNATORQUE DT90 WWW.DYNATORQUE.COM 10/12/05					
13	1	EXPANSION PLUG,1.00,.25				SD		
14	1	GREASE, COMMERCIAL GRADE						
15	1	COVER GASKET, DT 60/90						
16	2	NUT, JAM, 3/4-10						