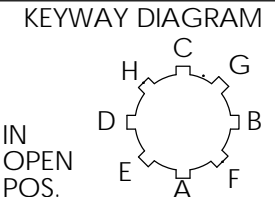
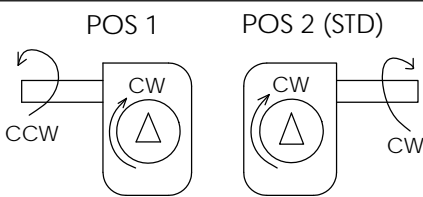


CONSULT FACTORY FOR SPECIAL
SHAFT AND INDICATOR CONFIGURATIONS.



GREASED FOR LIFE
STAINLESS STEEL CONSTRUCTION
(IRON/CRS GEARS)
MAX STEM HEIGHT: 2.62 [66.6]
WORM WHEEL RECESS: .25 [6.4]

HANDWHEEL
RECOMMENDED ϕ : 36 IN
RIM PULL AT
MAX TORQUE: 109 LBS
TURNS FOR 90°: 15

RATIO: 60:1
TORQUE: 26,000 IN LBS
[2963 N-M]
TEMPERATURE: -20° TO 150°F
[-29° TO 66°C]
WEIGHT: 33 LBS [15 KGS]

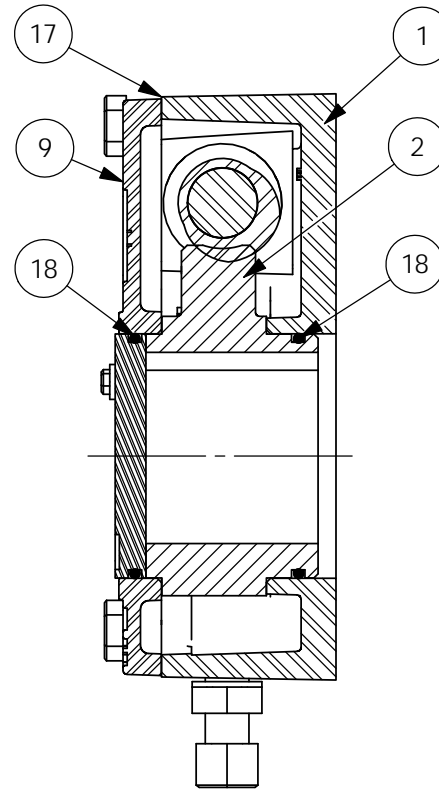
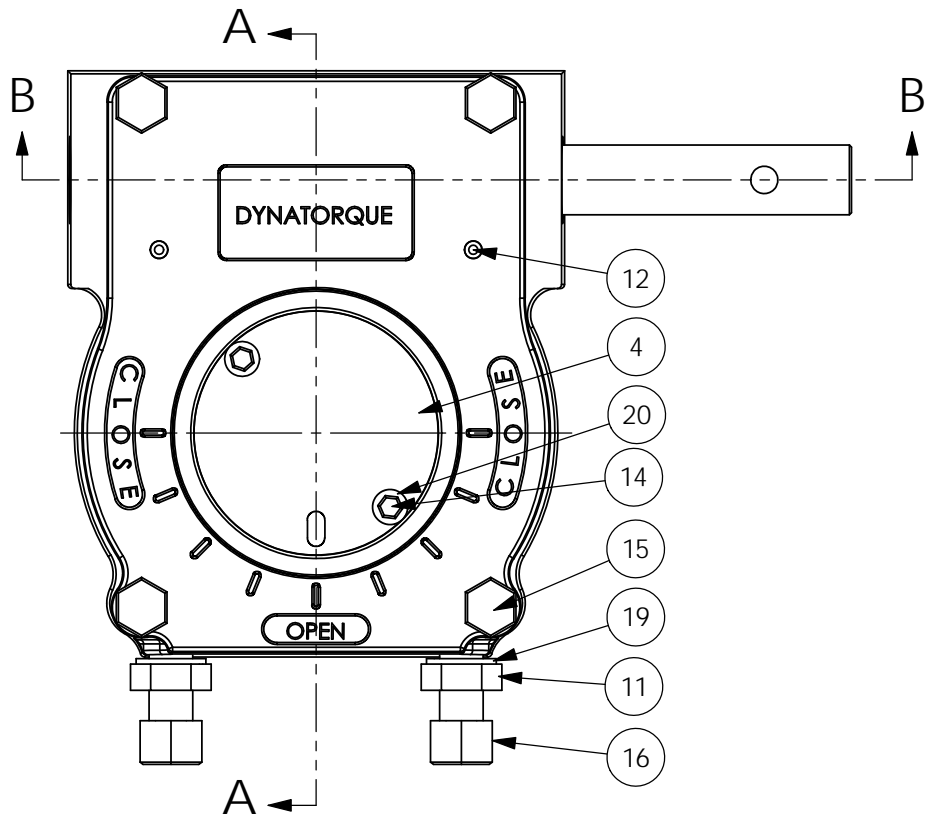
HOUSING MOUNTING PATTERN

BORE & KEY

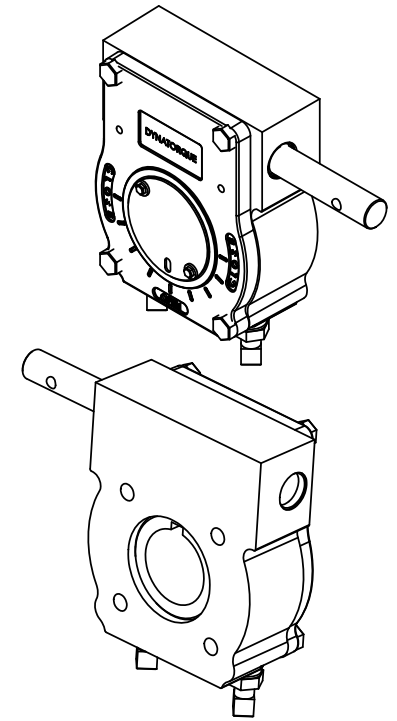
**MANUAL 1/4 TURN ACTUATOR
COMMERCIAL GRADE**

MAX	MAX ON CENTER	STD	MIN	MAX	STD	MIN
ϕ 7.000 3/4-10 UNC	ϕ 5.625 3/8-16 UNC	ϕ 5.512 5/8-11 UNC	ϕ 4.500 5/8-11 UNC	ϕ 2.750 .625 X .438 KEY	ϕ 2.500 .500 KEY @C	ϕ 1.500

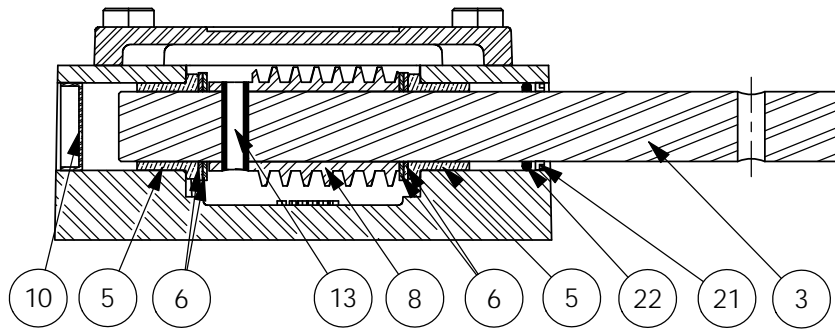
**DYNATORQUE DT21
SS**
WWW.DYNATORQUE.COM



SECTION A-A



7 UNIT BEARINGS, O-RINGS AND GEAR TEETH ARE GREASED.



SECTION B-B

ITEM	QTY.	DESCRIPTION	ITEM	QTY.	DESCRIPTION
1	1	HOUSING,DT21, SS	15	4	HHCS, 1/2-13 X 1.00 LG,SS
2	1	W/WHEEL,DT21SI	16	2	SHSS, 5/8-11 X 3.00, SS
3	1	SHAFT,DT16/21,G=7.74/7.59,.391,SS	17	1	LIQUID SEALANT, LOCTITE 51580
4	1	INDICATOR,DT21 SI	18	2	O-RING,2-236
5	2	BEARING,FLANGED,1.250,1.000,.880	19	2	THREAD SEAL, BONDED
6	4	THRUST WASHER,1.00,.061	20	2	THREAD SEAL, BONDED
7	1	GREASE, COMMERCIAL GRADE	21	1	LIP SEAL,1.00
8	1	WORM,DT21	22	1	O-RING,2-214
9	1	COVER,DT21, MACH,SS			
10	1	EXPANSION PLUG,1.250,.31,SS			
11	2	NUT,JAM,5/8-11,SS			
12	2	DOWEL PIN,.250,.75			
13	1	COIL PIN,.375,1.25			
14	2	HHCS,10-32 X.75,SS			

DYNATORQUE
WWW.DYNATORQUE.COM

DT21
SS