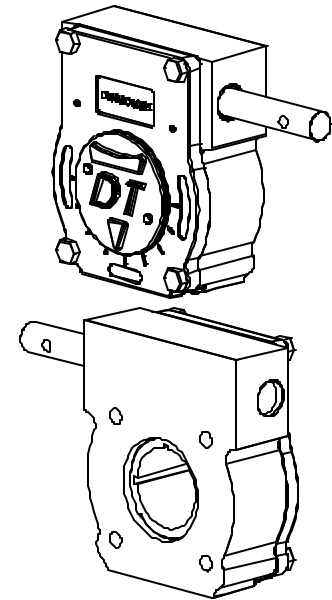
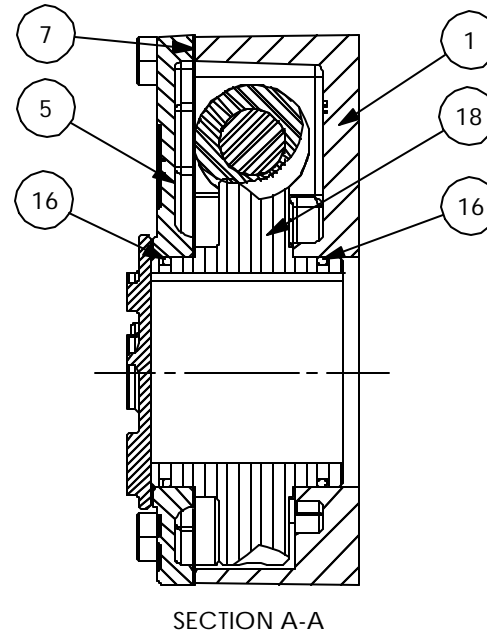
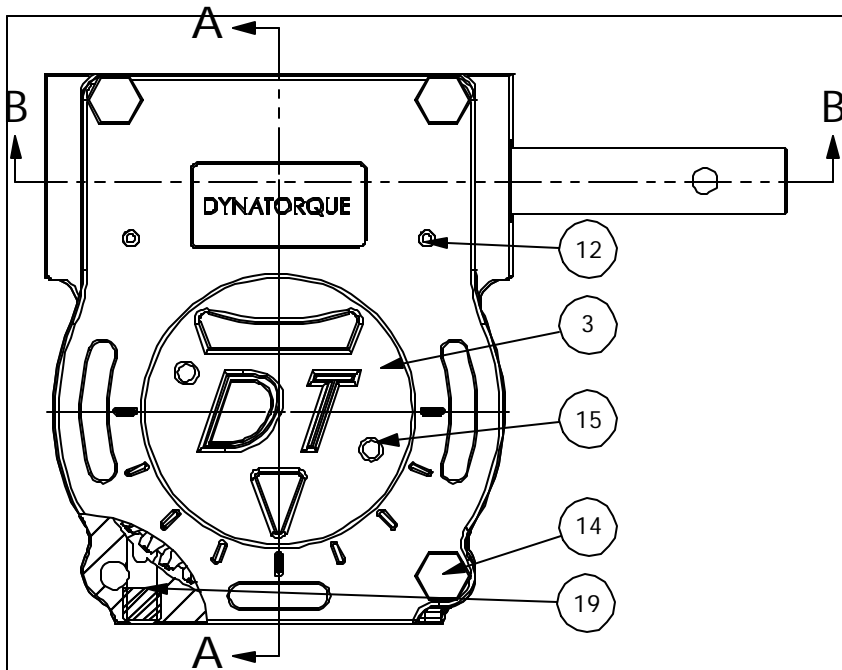
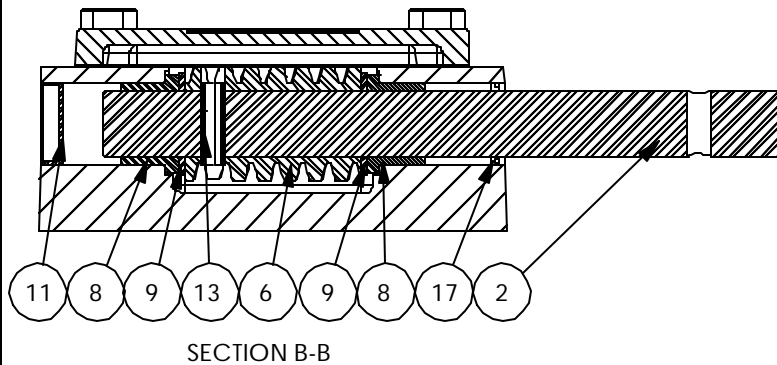


CONSULT FACTORY FOR SPECIAL
SHAFT AND INDICATOR CONFIGURATIONS.

						GREASED FOR LIFE PLATED STANDARD SHAFT MAX STEM HEIGHT: 3.12 [79.2] WORM WHEEL RECESS: .25 [6.4]		HANDWHEEL RECOMMENDED ϕ : 36 IN RIM PULL AT MAX TORQUE: 77 LBS TURNS FOR 360°: 44		RATIO: 44:1 TORQUE: 16,000 IN LBS [1808 N-M] TEMPERATURE: -20° TO 150°F [-29° TO 66°C] EST. WEIGHT: 33 LBS [15 KGS]	
HOUSING MOUNTING PATTERN				BORE & KEY			MANUAL MULTI TURN WORM GEAR OPERATOR COMMERCIAL GRADE				
MAX	MAX ON CENTER	STD	MIN	MAX	STD	MIN	DYNATORQUE 1934 E. SHERMAN MUSKEGON, MI 49444-1824 (231) 739-1377 FAX (231) 739-4514 WWW.DYNATORQUE.COM 4/1/05				
ϕ 7.000 3/4-10 UNC	ϕ 6.000 1/2-13 UNC	ϕ 6.000 5/8-11 UNC	ϕ 4.500 5/8-11 UNC	ϕ 2.750 .625 X .438 KEY	ϕ 2.750 .250 KEYS @B, C	ϕ 1.500					



- ④ UNIT IS PAINTED BLACK OXIDE.
- ⑩ UNIT BEARINGS, O-RINGS AND GEAR TEETH ARE GREASED.



ITEM	QTY.	DESCRIPTION	ITEM	QTY.	DESCRIPTION
1	1	HOUSING, DT16	13	1	COIL PIN, .375, 1.25
2	1	SHAFT, DT16, G=7.74, .391	14	4	HHCS, 1/2-13 X 1.00 LG
3	1	INDICATOR, DT16/21	15	2	PHCS, 10-32, .62
4	1	BLACK OXIDE	16	2	O-RING, 2-236
5	1	COVER, DT16/21, 360/180	17	1	LIP SEAL, 1.00
6	1	WORM, DT16	18	1	W/WHEEL, DT16, 360
7	1	COVER GASKET, DT16/21	19	2	SET SCREW, 5/8-11, .50
8	2	BEARING, FLANGED, 1.250, 1.000, .880	<p>DYNATORQUE 1934 EAST SHERMAN BLVD MUSKEGON, MI 49444-1824 (231) 739-1377 FAX (231) 739-4514 WWW.DYNATORQUE.COM 4/1/05</p>		
9	2	THRUST WASHER, 1.00, .092			
10	1	GREASE, COMMERCIAL GRADE			
11	1	EXPANSION PLUG, 1.250, .31			
12	2	DOWEL PIN, .250, .75			

DT16