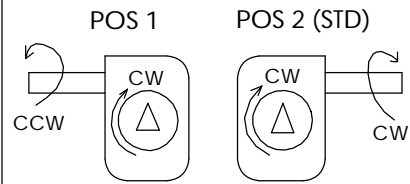


CONSULT FACTORY FOR SPECIAL CONFIGURATIONS



UNITS ARE AVAILABLE IN FAIL COUNTERCLOCKWISE OR FAIL COUNTERCLOCKWISE, UNIT SHOWN IN HOME POSITION FOR FAIL COUNTERCLOCKWISE.

GREASED FOR LIFE.

PLATED STANDARD SHAFT.

MAX DRIVER BORE & KEY

MAX IN LINE	MAX
Ø 1.250 .250 X .188 KEY	Ø 1.500 .375 X .250 KEY

HANDWHEEL

RECOMMENDED Ø: 18 IN RIM PULL AT
MAX TORQUE: 95 LBS
TURNS FOR 90°: 14.25

RATIO: 57:1
TORQUE: 12,000 IN LBS [13568 N-M]
TEMPERATURE: -20° TO 150°F [-29° TO 66°C]
WEIGHT
UNIT: 30 LBS [13.6 KG]
DRIVER: 7 LBS [3.2 KG]
HANDWHEEL: 6 LBS [2.7 KG]

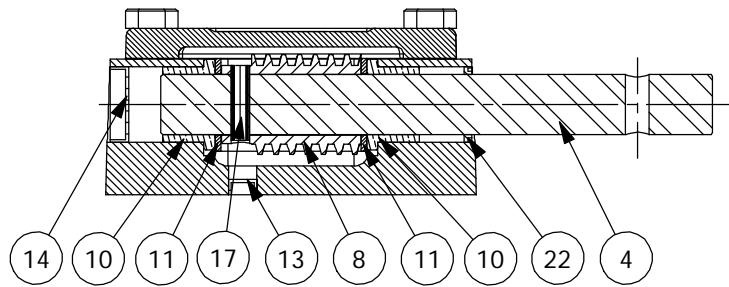
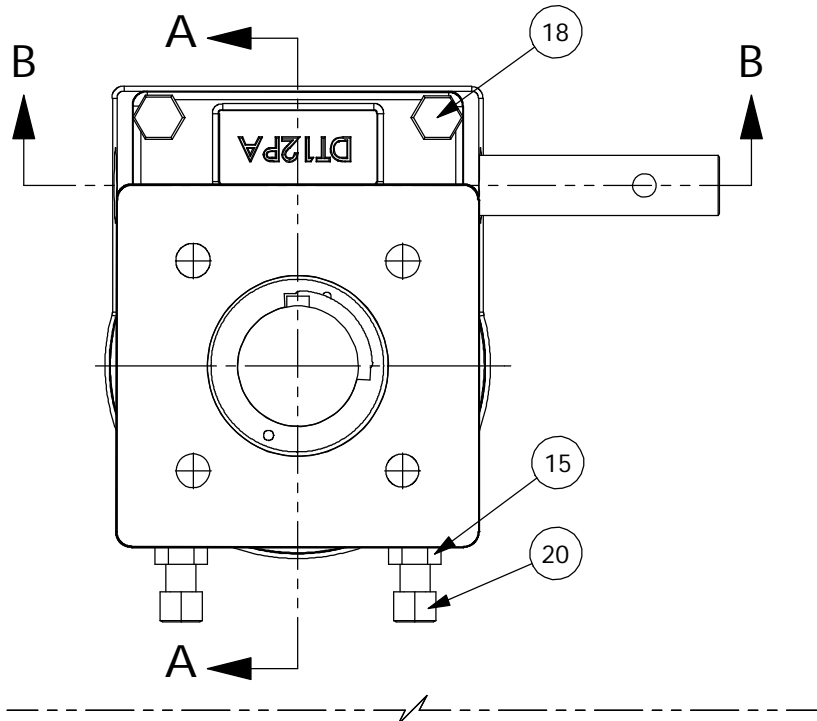
HOUSING MOUNTING PATTERN

COVER MOUNTING PATTERN

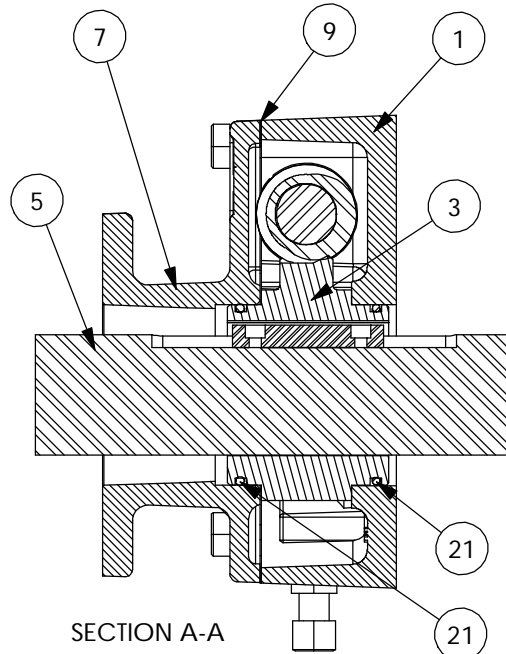
MANUAL 1/4 TURN ACTUATOR
COMMERCIAL GRADE

MAX	MAX ON CENTER	STD	MIN	MAX	MAX ON CENTER	STD	MIN
Ø 6.496 3/4-10	Ø 5.250 1/2-13	Ø 4.921 1/2-13	Ø 3.750 3/8-16	Ø 6.496 Ø .812	Ø 5.375 Ø .688	Ø 4.920 Ø .562	Ø 4.750 Ø .562

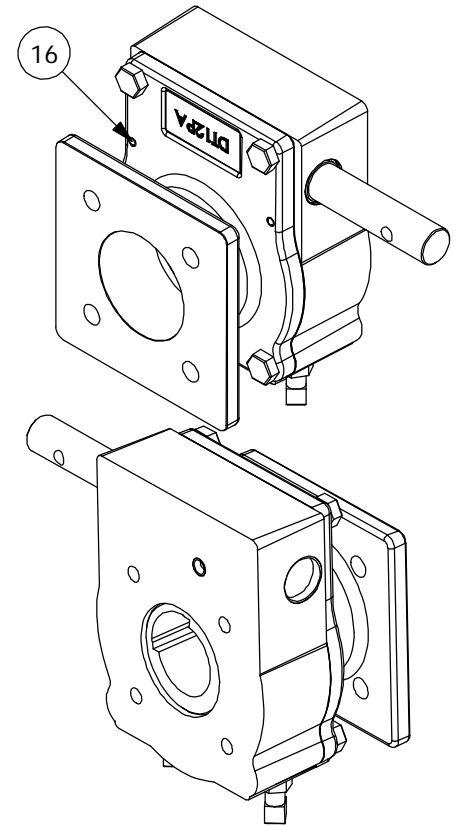
DYNATORQUE DT12 SRD
1934 E. SHERMAN MUSKEGON, MI 49444-1824
(231) 739-1377 FAX (231) 739-4514
WWW.DYNATORQUE.COM



SECTION B-B



SECTION A-A



- 6 UNIT IS PAINTED BLACK OXIDE.
- 12 UNIT BEARINGS, O-RINGS AND GEAR TEETH ARE GREASED.
- 19 18" HAND WHEEL NOT SHOWN.

ITEM	QTY.	DESCRIPTION	ITEM	QTY.	DESCRIPTION
1	1	HOUSING,DT12	15	2	NUT,JAM,1/2-13
2	4	PLASTIC PLUG FOR SHIPPING	16	2	DOWEL PIN,.250,.75
3	1	W/WHEEL, DT12 SRD	17	1	COIL PIN,.313,1.25
4	1	SHAFT,DT12,STD	18	4	HHCS, 1/2-13 X 1.00 LG
5	1	DR SRD, DT12	19	1	HWRR 18"
6	1	BLACK OXIDE	20	2	SHSS, 1/2-13 X 3.00
7	1	COVER, DT12SD	21	2	O-RING,2-232
8	1	WORM, DT12	22	1	LIP SEAL,1.00
9	1	COVER GASKET, DT12			
10	2	BEARING,FLANGED,1.25,1.00,.88			
11	2	THRUST WASHER,1.00,.092			
12	1	GREASE, COMMERCIAL GRADE			
13	1	EXPANSION PLUG,.468,.250			
14	1	EXPANSION PLUG,1.250,.31			

DYNATORQUE
 1934 EAST SHERMAN BLVD
 MUSKEGON, MI 49444-1824
 (231) 739-1377 FAX (231) 739-4514
 WWW.DYNATORQUE.COM

**DT12
 SRD**