

GREASED FOR LIFE
 MAX STEM HEIGHT: 2.00 [50.8]

HANDWHEEL
 RECOMMENDED ϕ : 6 IN
 RIM PULL AT
 MAX TORQUE: 62 LBS
 TURNS FOR 90°: 7.5

RATIO: 30:1
 TORQUE: 1500 IN LBS
 [169 N-M]
 TEMPERATURE: -20° TO 150°F
 [-29° TO 66°C]
 EST. WEIGHT: 6 LBS [2.7 KGS]

HOUSING MOUNTING PATTERN

BORE & KEY

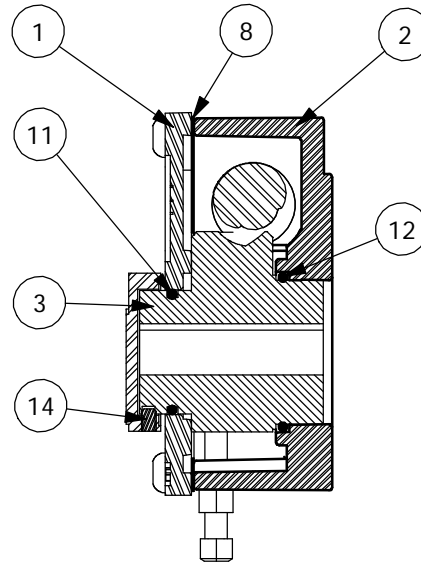
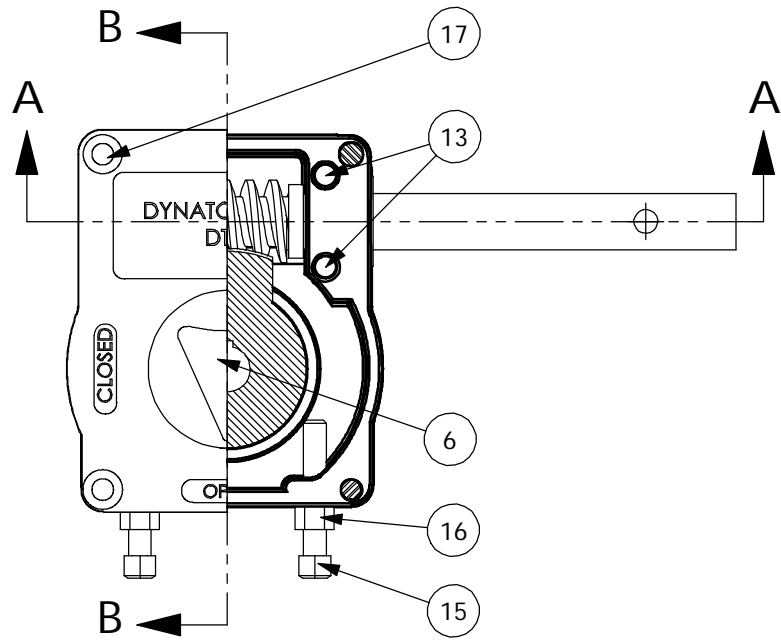
**MANUAL 1/4 TURN ACTUATOR
 COMMERCIAL GRADE**

MAX	MAX ON CENTER	STD	MIN	MAX	STD	MIN
ϕ 3.250 3/8-16 UNC	ϕ 2.625 3/8-16 UNC	ϕ 2.756 5/16-18 UNC	ϕ 2.000 1/4-20 UNC	ϕ .938 250 X .188 KEY	ϕ .500 .125 KEY @C	ϕ .375 .125 KEY

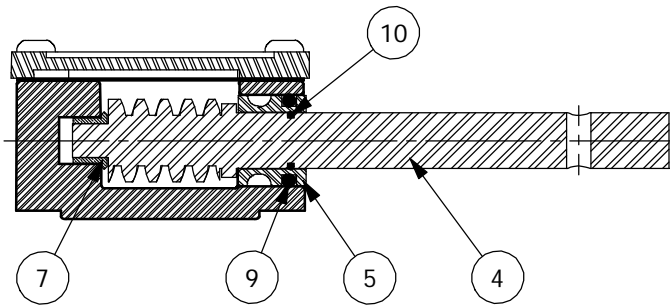
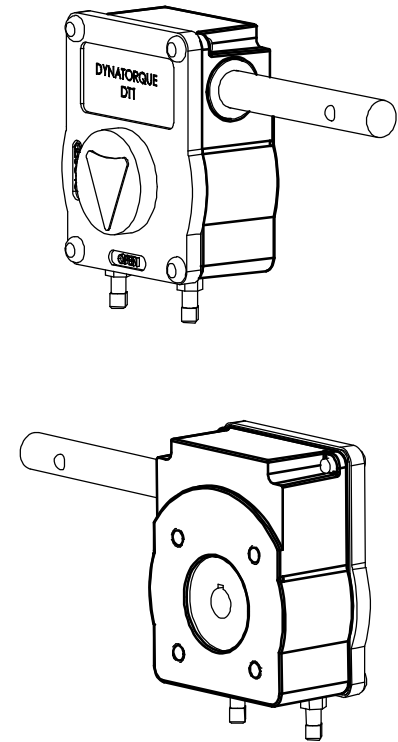
DYNATORQUE
 1934 E. SHERMAN MUSKEGON, MI 49444-1824
 (231) 739-1377 FAX (231) 739-4514
 WWW.DYNATORQUE.COM

DT1

33-20XX SHEET 1 OF 2 12/19/03



SECTION B-B



SECTION A-A

NOTE: UNIT IS E-COATED BLACK.

18 UNIT BEARINGS, O-RINGS AND GEAR TEETH ARE GREASED.

ITEM	QTY.	DESCRIPTION	ITEM	QTY.	DESCRIPTION
1	1	COVER, DT1, STD	12	1	O-RING, 2-129
2	1	HOUSING, DT1	13	2	DOWEL PIN, .250, 1.00
3	1	W/WHEEL, DT1	14	1	SET SCREW, 8-32, .25
4	1	WORM SHAFT, DT1	15	2	SHSS, 1/4-20 X 1.50
5	1	RETAINER, DT1	16	2	NUT, JAM, 1/4-20
6	1	INDICATOR, DT1, COM	17	4	TORX HD SCREW, 1/4-20 X .63
7	1	BEARING, FLANGED, .500, .375, .38	18	1	GREASE, COMMERCIAL GRADE
8	1	GASKET, DT1, COMMERCIAL	DYNATORQUE 1934 EAST SHERMAN BLVD MUSKEGON, MI 49444-1824 (231) 739-1377 FAX (231) 739-4514 WWW.DYNATORQUE.COM		
9	1	O-RING, 2-210			
10	1	O-RING, 2-014			
11	1	O-RING, 2-123	DT1		