

NOTE: UNIT STAMPED WITH NO. OF TURNS AND SERIAL NUMBER.

CONSULT FACTORY FOR SPECIAL CONFIGURATIONS.

AVAILABLE COUNTER CLOCKWISE OR CLOCKWISE TO CLOSE

GROUND LEVEL POSITION INDICATOR - STD
1-19 TURNS

SHAFT DIAMETERS

NUMBER OF TURNS

MIN.

MAX.

MIN.

MAX.

Ø .750 [19.05]

Ø 1.250 [31.75]
STD.

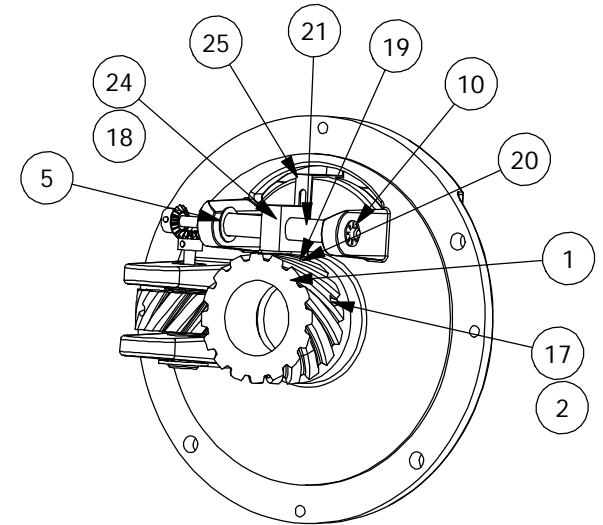
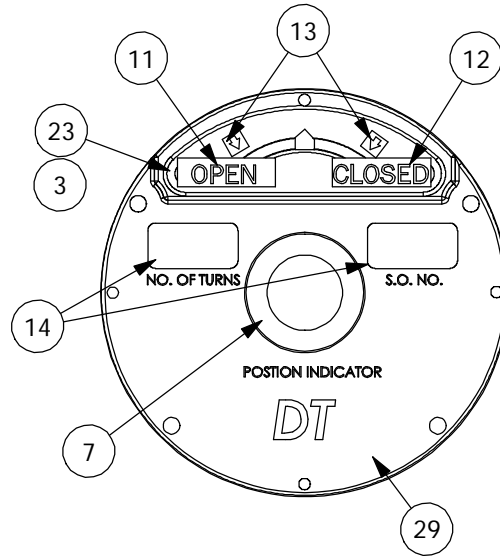
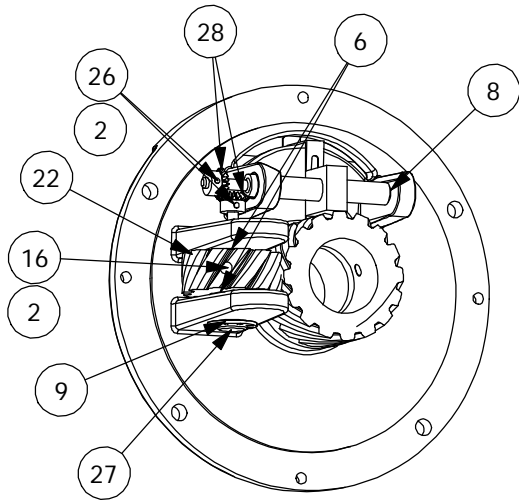
1

19

DYNATORQUE

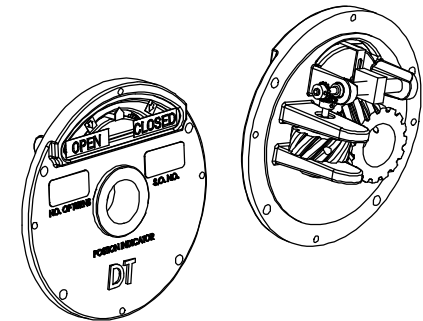
1934 E. SHERMAN MUSKEGON, MI 49444-1824
(231) 739-1377 FAX (231) 739-4514
WWW.DYNATORQUE.COM

**GPI
1-19**



- 4 UNIT IS PAINTED WHITE ENAMEL.
- 15 UNIT IS LUBRICATED WITH LITHIUM GREASE.
- 30 VALVE BOX ADAPTER NOT SHOWN.

| ITEM | QTY. | DESCRIPTION | ITEM | QTY. | DESCRIPTION |
|------|------|------------------------------------|------|------|---------------------------------|
| 1 | 1 | GEAR, MAIN DRIVE | 16 | 1 | SET SCREW, 1/4-20, .250 |
| 2 | 1 | LOCTITE 271-21 | 17 | 1 | SET SCREW, 1/4-20, .375 |
| 3 | 1 | SEALANT #732 RTV, DOW | 18 | 1 | PAN HD, 6-32, .25, S/TAP |
| 4 | 1 | PAINT, WHITE ENAMEL | 19 | 1 | RD HD, 4-24, S/TAP, .25 |
| 5 | 1 | PLASTIC BUSHINGS | 20 | 1 | WASHER, FLAT, #4, BRASS |
| 6 | 2 | PLASTIC BUSHINGS | 21 | 1 | TRAVELING NUT SHAFT |
| 7 | 1 | BEARING, FLANGED, 1.50, 1.25, 1.00 | 22 | 1 | PI DRIVE GEAR, "SMALL" |
| 8 | 1 | PLASTIC BUSHINGS | 23 | 1 | PI WINDOW |
| 9 | 1 | STAR RETAINING RING | 24 | 1 | TRAVELING NUT PI |
| 10 | 1 | STAR RETAINING RING | 25 | 1 | PI INDICATOR POINTER |
| 11 | 1 | DECAL, "OPEN" | 26 | 2 | SET SCREW, 4-40 X .125 |
| 12 | 1 | DECAL, "CLOSED" | 27 | 1 | DRIVE GEAR SHAFT, WPI |
| 13 | 2 | DECAL, ARROW | 28 | 2 | BEVEL GEAR, CHANGE, GPI, 10-19 |
| 14 | 2 | ADEHESIVE TAG, FOIL | 29 | 1 | BASEPLATE, WPI |
| 15 | 1 | GREASE, LITHIUM | 30 | 1 | VAVE BOX ADAPTER FOR WPI - MACH |



| | |
|--|---|
| <p>DYNATORQUE 1934 EAST SHERMAN BLVD MUSKEGON, MI 49444-1824 (231) 739-1377 FAX (231) 739-4514 WWW.DYNATORQUE.COM</p> | <p>GPI 1-19</p> |
|--|---|