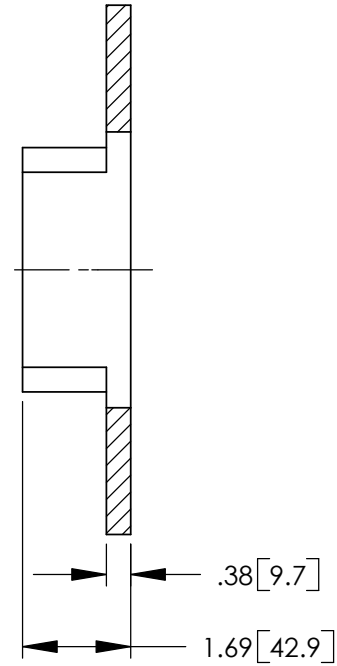
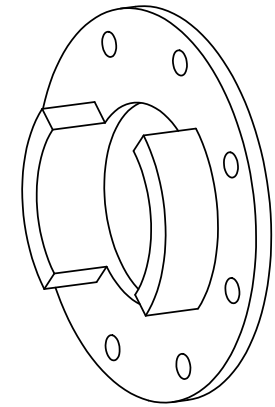


8x  $\phi .53 [13.5]$   $\nabla$   
 EQUALLY SPACED  
 ON A  $\phi 6.96 [176.8]$  B.C.



SECTION A-A



- NOTES:  
 1. STEEL CONSTRUCTION.  
 2. MOUNTING HARDWARE INCLUDED.

	3/17/03 BJM TWD	BY DATE	CHKD CHKD	This drawing, the structural design disclosed therein and the technical data and engineering service represented thereby, are the exclusive property of Dyna-Torque Incorporated. It is to be returned to Dyna-Torque upon written request and it is not to be reproduced in whole or in part or disclosed to anyone else without the express written consent of Dyna-Torque Incorporated.	<b>DYNATORQUE</b> 1934 EAST SHERMAN BLVD MUSKOGON, MI 49444-1824 (231) 739-1377 FAX (231) 739-4514
	REDRAWN IN SW ER# 13026	DESCRIPTION	NAME OF PART DRIVER, LUG, BG6, STYLE D		
A	REV	DESCRIPTION	NOTE		
				PART NO. 24-002	REV A